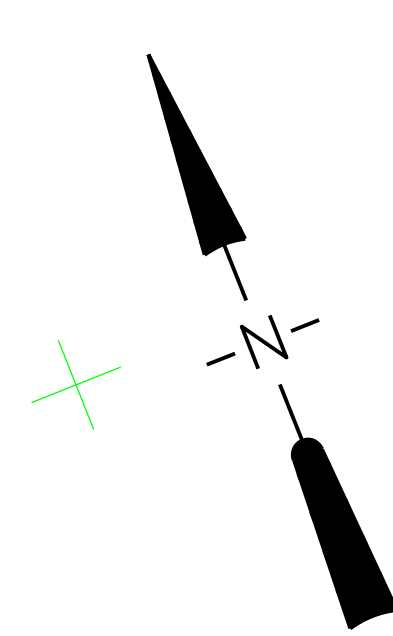
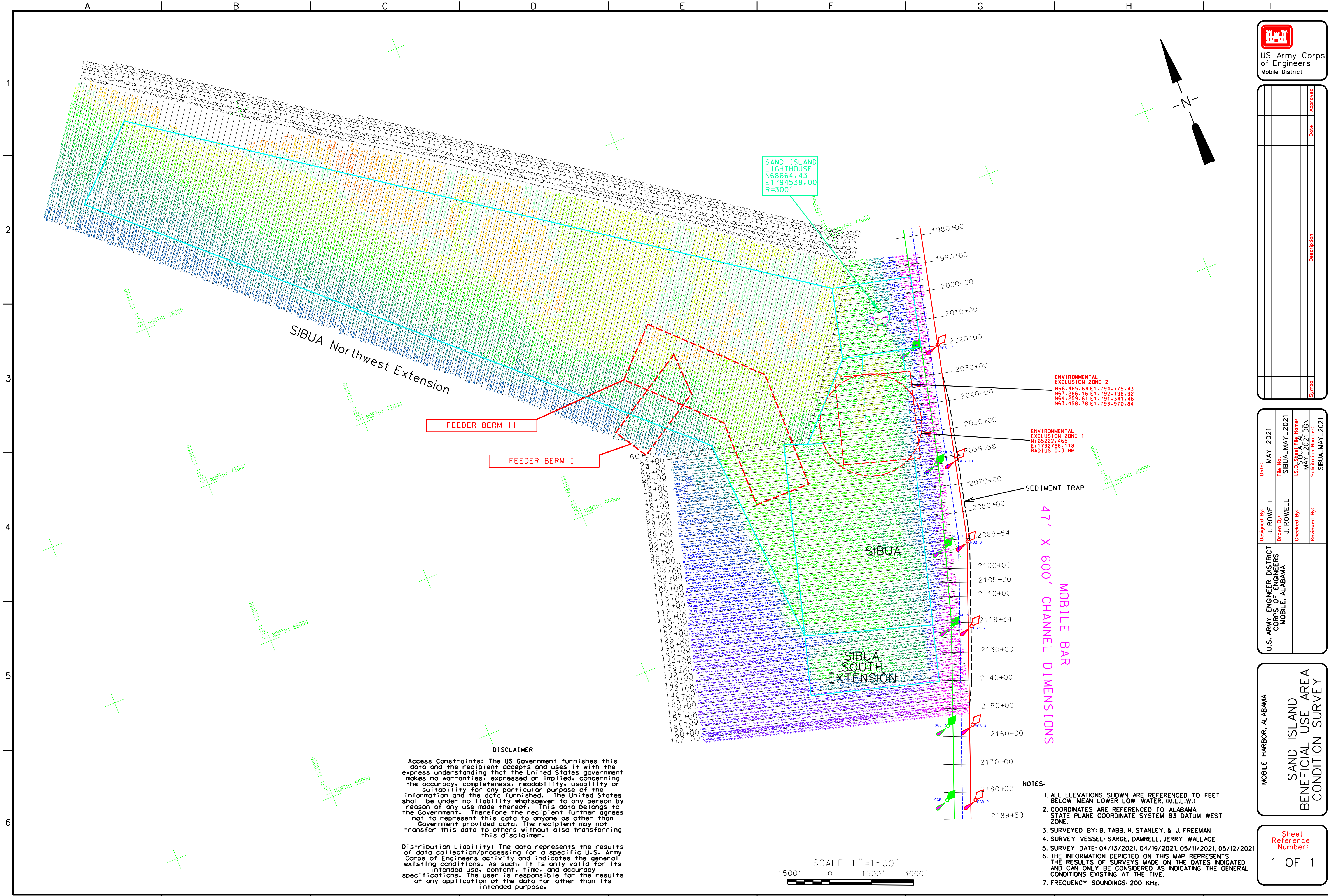


Symbol	Description	Date	Approved

U.S. ARMY ENGINEER DISTRICT CORPS OF ENGINEERS MOBILE, ALABAMA	Designed By: J. ROWELL	Date: MAY 2021
MOBILE HARBOR, ALABAMA	Drawn By: J. ROWELL	File No.: SIBUA_MAY_2021
	Checked By:	I.S.O. Sheet File Name: SIBUA_MAY_2021.DGN
	Reviewed By:	Submission Number: SIBUA_MAY_2021

MOBILE HARBOR, ALABAMA  
SAND ISLAND  
BENEFICIAL USE AREA  
CONDITION SURVEY



**DISCLAIMER**

Access Constraints: The US Government furnishes this data and the recipient accepts and uses it with the express understanding that the United States government makes no warranties, expressed or implied, concerning the accuracy, completeness, readability, usability or suitability for any particular purpose of the information and the data furnished. The United States shall be under no liability whatsoever to any person by reason of any use made thereof. This data belongs to the Government. Therefore the recipient further agrees not to represent this data to anyone as other than Government provided data. The recipient may not transfer this data to others without also transferring this disclaimer.

Distribution Liability: The data represents the results of data collection/processing for a specific U.S. Army Corps of Engineers activity and indicates the general existing conditions. As such, it is only valid for its intended use, content, time, and accuracy specifications. The user is responsible for the results of any application of the data for other than its intended purpose.

**NOTES:**

- ALL ELEVATIONS SHOWN ARE REFERENCED TO FEET BELOW MEAN LOWER LOW WATER (M.L.L.W.)
- COORDINATES ARE REFERENCED TO ALABAMA STATE PLANE COORDINATE SYSTEM 83 DATUM WEST ZONE.
- SURVEYED BY: B. TABB, H. STANLEY, & J. FREEMAN
- SURVEY VESSEL: SARGE, DAMRELL, JERRY WALLACE
- SURVEY DATE: 04/13/2021, 04/19/2021, 05/11/2021, 05/12/2021
- THE INFORMATION DEPICTED ON THIS MAP REPRESENTS THE RESULTS OF SURVEYS MADE ON THE DATES INDICATED AND CAN ONLY BE CONSIDERED AS INDICATING THE GENERAL CONDITIONS EXISTING AT THE TIME.
- FREQUENCY SOUNDINGS: 200 KHz.

